

# **West Souris River Conservation District Member Handbook**

## **West Souris River Conservation District Programs**

Note: Application forms exist for programs and rental equipment. Please consult with the WSRCD office for details on application forms as the forms may change from year to year.

### **2011-12 Budgeted Programs**

#### **Soil**

##### **Salinity Seed Program**

Objective is to seed forages on saline soils throughout the WSRCD to address the growing concerns associated with salinity.

- The WSRCD will bulk order saline seed
- One mixture will be available
- Forage Mixture – Tap Rooted Alfalfa, Tall Fescue,
- Sweet Clover, Creeping Alfalfa, Slender Wheat Grass.
- Limit of 10 acres per applicant
- WSRCD will cover 100% of the cost.

##### **Forage in Rotation Program**

Objective is to use alfalfa in a crop rotation to increase soil nitrogen, improve soil texture and control erosion.

- Forage to Annual Crop - \$10/acre (50 acre maximum)
- Forage to Forage - \$5/acre (50 acre maximum)
- Maximum annual assistance will be \$500.00 for each producer

##### **Forage for Program Soils**

The objective of this program is to assist landowners in the establishment of forages on soils that may be unproductive under annual cereal cropping due to one or more of the following conditions: Salinity, Flooding, and Drought.

- Applicant is eligible for \$10.00/acre to a maximum of \$400.00/farm with a minimum of 10 acres enrolled
- Applications must be in landowners name and applicants are only eligible to apply every 3<sup>rd</sup> year.

# **West Souris River Conservation District Member Handbook**

## **Field Shelterbelt Program**

The objective is to establish yard and field shelterbelts to act as a barrier to reduce and redirect wind, absorb excessive moisture, trap snow, and remove carbon dioxide from the air.

- Field or Yard Shelterbelt \$750.00/ mile
- Shelterbelt will be maintained over three years with replants
- A minimum charge of \$250.00 dollars

## **Rotational Grazing Assistance**

The objective is to assist landowners in the development of a rotational grazing system on pastures to increase productivity and ensure sustainability of pastures. Benefits will include reduced run-off, increased infiltration, and a build up of organic matter.

- Provide 80% assistance toward the cost of materials for the development of a fencing system to a maximum of \$1000.00

## **Water**

### **Abandoned Well Sealing Program**

Objective is to protect quality of groundwater, eliminate the safety hazard to humans and livestock and promote the importance of water quality within the WSRCD.

- WSRCD will pay 100% of the cost of sealing each well to a maximum of \$200.00.

### **Well Shock Chlorination Program**

The objective is to help maintain the groundwater quality and improve drinking water quality.

- WSRCD will perform the work and the cost is \$100.00 per well.

### **Remote Watering Demonstration**

The objective is to provide landowners to temporarily use a remote watering system in an effort to increase the number of systems within the conservation district. The program will help improve livestock health and productivity and to protect surface water.

- The landowner will be provided with a remote water system for weeks with a possibility of extension depending on demand at no charge.

# **West Souris River Conservation District Member Handbook**

## **Water Storage Program**

The objective of the water storage program is to promote water conservation through the construction of dams or weirs. Multi-purpose projects will be encouraged, whenever feasible. Benefits derived may include water storage for livestock, irrigation, flood control, or wildlife habitat.

- Projects may include: water storage for back flooding and/or flood control.
- Modified drop inlets or control gates on culverts
- Small Dams for multiple uses
- Projects are cost shared the landowner contribution is 15%.

## **Livestock Watering Improvement Program**

The objective is to demonstrate the values of riparian and water management by cooperating with producers to deliver program options to meet their goals. Such options included fencing of buffer strips to improve existing vegetation through limited grazing, provision of alternative watering systems and stabilization of streambanks to reduce siltation caused by erosion.

- 50% of costs (material & labour) to a maximum of \$1000.00.

## **Grassed Waterway Program**

Objective of this program is to stabilize existing water channels to encourage the establishment of grassed waterways to prevent channel erosion, prevent erosion on adjacent lands, and protect water quality.

- WSRCD will pay 50% of the total project costs up to a maximum of \$1000.00.

## **Souris River Enhancement Program**

The objectives are to improve the quality of water provided to livestock through the use of remote watering systems, to protect surface water quality, and protect fish and wildlife habitat.

- The WSRCD will pay 100% of the total cost of remote watering system materials and fencing.

# **West Souris River Conservation District Member Handbook**

## **Education**

### **Conservation in the Classroom**

The WSRCD provides \$1,000 for each school in the District to be used towards conservation education materials and activities.

### **Southwest Manitoba Water Festival**

A joint water education festival offered cooperatively by the Assiniboine Hills, Turtle Mountain and West Souris River Conservation Districts which informs students about different aspects of water (use, contamination, forms, safety, etc) through various activity stations.

Mission: to educate and engage youth in the importance of healthy watersheds.

### **Oak Hammock Marsh**

WSRCD sponsors the “On-the-Go” Program put on by the Oak Hammock Marsh Interpretive Center for all the schools in the District on an annual basis.

### **Canupawakpa Trail – A self-Guiding Nature Trail**

- This self-guided 1km trail was developed from 1998-1999 just north of Reston along the Pipestone Creek. More than 400 visitors signed the guest book in the first summer that the trail was open. Tourists from around the world visit. Staff provides guided tours to school classes and this is a favorite with 4-H members during annual rallies.

### **Malaher Wildlife Management Area**

- 4.5KM of trails which wind throughout this management area. Located 1.6KM west of Melita.

### **Pipestone-Sifton Conservation Award**

- Scholarship bursary awarded to students continuing their education in Agriculture or Resource Management. Must be residents or have family owned land in the Pipestone or Sifton municipalities.

### **Computer Mapping**

- WSRCD has recent aerial imagery of the conservation district and can provide printed images and acre counts.

# **West Souris River Conservation District Member Handbook**

## **Miscellaneous Education**

- Coordinate and promote conservation tours, activities and workshops for the youth, landowners, general public and other interest groups. These activities are organized as required and as opportunities arise. Various examples of these activities include: woodlot management workshop, extended grazing season tour, salinity workshop, riparian workshop, low-stress livestock handling workshop, holistic resource management workshop, etc.

## **Equipment Rentals**

### **Broadcast Seeders**

- A PTO operated broadcast seeder; electric broadcast seeder and hand broadcast seeder are available for use within the WSRCD for seeding. Seeders are available at no charge to landowners; however there is a \$50.00 refundable deposit required.

### **Pipeline Plow**

- A pipeline plow is jointly owned between the TMCD and WSRCD for use to plow shallow burial pipeline for remote watering purposes. There is a cost of \$100 / day for use and landowners must supply a tractor.
- WSRCD staff will deliver and pick up plow.

### **PTO and Gas Water Pumps**

- PTO and Gas water pumps are available for use within the District for filling dugouts.
- Pumps and hose are on a trailer with either 3 inch or 4 inch hose
- WSRCD staff is responsible for delivery and setup unless informed otherwise.
- Call WSRCD for pumping equipment prices

### **Tree Planters**

- WSRCD owns a tree planter that trails behind a tractor.
- Tree planter is free to rent, however there is a \$50.00 refundable deposit required. Deposit will be refunded upon return of the planter. Availability is dependant on use by WSRCD staff for tree planting program.

## West Souris River Conservation Member Handbook

### **What is a Conservation District?**

A Conservation District (CD) is composed of local people managing the resource concerns of their area for the long-term benefit of everyone. Since 1972, CDs have been bringing local people together to manage resources across political boundaries and are commonly based on watershed or sub-district boundaries. Emphasis is placed on integrated soil and water resource management and source water protection with strong educational components. The program continues to grow as a direct result of local people working together building successful partnerships with all levels of government

### **Purpose of a Conservation District**

Conservation Districts are established under the authority of The Conservation Districts Act. There are currently 18 Conservation Districts in Manitoba covering over 70% of Agro Manitoba. District boundaries may be based on the drainage basin, or watershed, of the major river in the area or on municipal boundaries and may include part of all of several municipalities. The West Souris River Conservation is based on the RM boundaries as well as watershed on the eastern side following the Souris River. The extreme North West of the conservation district follows the Gopher Creek through the RM of Wallace into the RM of Pipestone.

Conservation Districts are organized to manage natural resources within a drainage basin or watershed. Resources such as soil, water, forests, and wildlife are all inter-related. Altering any single resource may indirectly or directly affect the management of other resources.

### **What is a Watershed?**

A watershed is an area of land that drains to a common point. All land within a watershed is connected by the water that moves over it. Large tracts of agricultural land and small puddles, like those in your backyard, are connected by flowing water. These areas are part of a watershed. Water moves downstream through a watershed, so when puddles fill and water spills over, it eventually ends up in a wetland, creek, river or lake.

# West Souris River Conservation Member Handbook

## West Souris River Conservation District History

The West Souris River Conservation District (WSRCD) was officially incorporated as Manitoba's seventh Conservation District on January 1, 1995. The West Souris River Conservation District (WSRCD) was formed in partnership with Pipestone, Albert, Sifton and Edward municipalities and the Province of Manitoba.

On April 1, 1999 the R M of Cameron was added. A second expansion in April, 2002 brought part of the R M of Wallace into the district. A total of seven sub districts were formed on the basis of the watersheds and several creeks within the district.

Boundary alignment with the Turtle Mountain Conservation District (TMCD) in 2004 saw the Souris River utilized as the boundary between the two districts. Six sub districts now make up WSRCD. The West Souris River Conservation District (WSRCD) now covers approximately 4208 square kilometers (1625 sq. miles) of south western Manitoba and includes part or all of the municipalities of Albert, Arthur, Cameron, Edward, Pipestone, Sifton and Wallace.

### Vision

The West Souris River Conservation District Board envisions a landscape where the land, water and related natural resources exist in a healthy sustainable state and are capable of supporting a healthy and economically viable watershed over the long term.

### Mission

The West Souris River Conservation District recognizes the important links between human health and watershed health. WSRCD through education, innovative leadership, community input and partnerships will strive to manage the watershed as a complex sustainable system emphasizing prevention and protection programs.

## West Souris River Conservation Member Handbook

### Population

Populations for the West Souris River Conservation District are broken down by rural municipalities and towns/villages from 2006 census data.

RM of Albert	339
RM of Arthur	440
RM of Cameron	433
RM of Edward	621
RM of Pipestone	1419
RM of Sifton	796
RM of Wallace	1501
Town of Melita	1051
Town of Oak Lake	396

The other towns/villages population data is combined with RM's

### WSRCD Physical Features

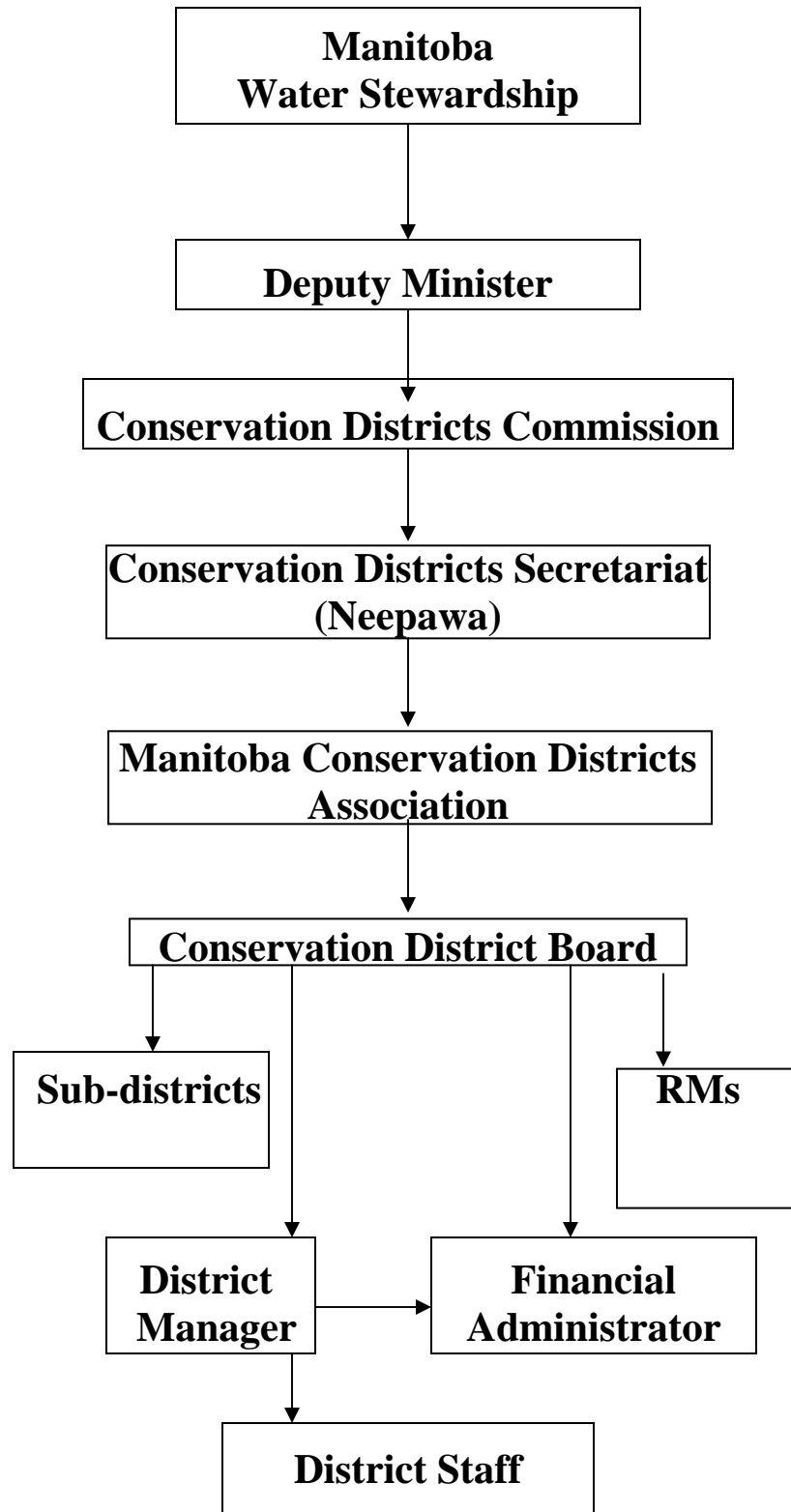
The WSRCD is part of the Souris River Basin, a 29,650 sq/km area of land which drains to the Souris River. The Souris River Basin spans two Canadian provinces and two American states.

The WSRCD watershed is topographically flat to gentle rolling plains with an elevation change of only 125 metres. There are two physiographic regions within the study area; the Oxbow Till Plain (to the northwest) and the Souris Plain (south and east). The Oak Lake aquifer is a significant sand and gravel aquifer in the watershed and is the primary water source of drinking water as well as supporting various industries with the study area.

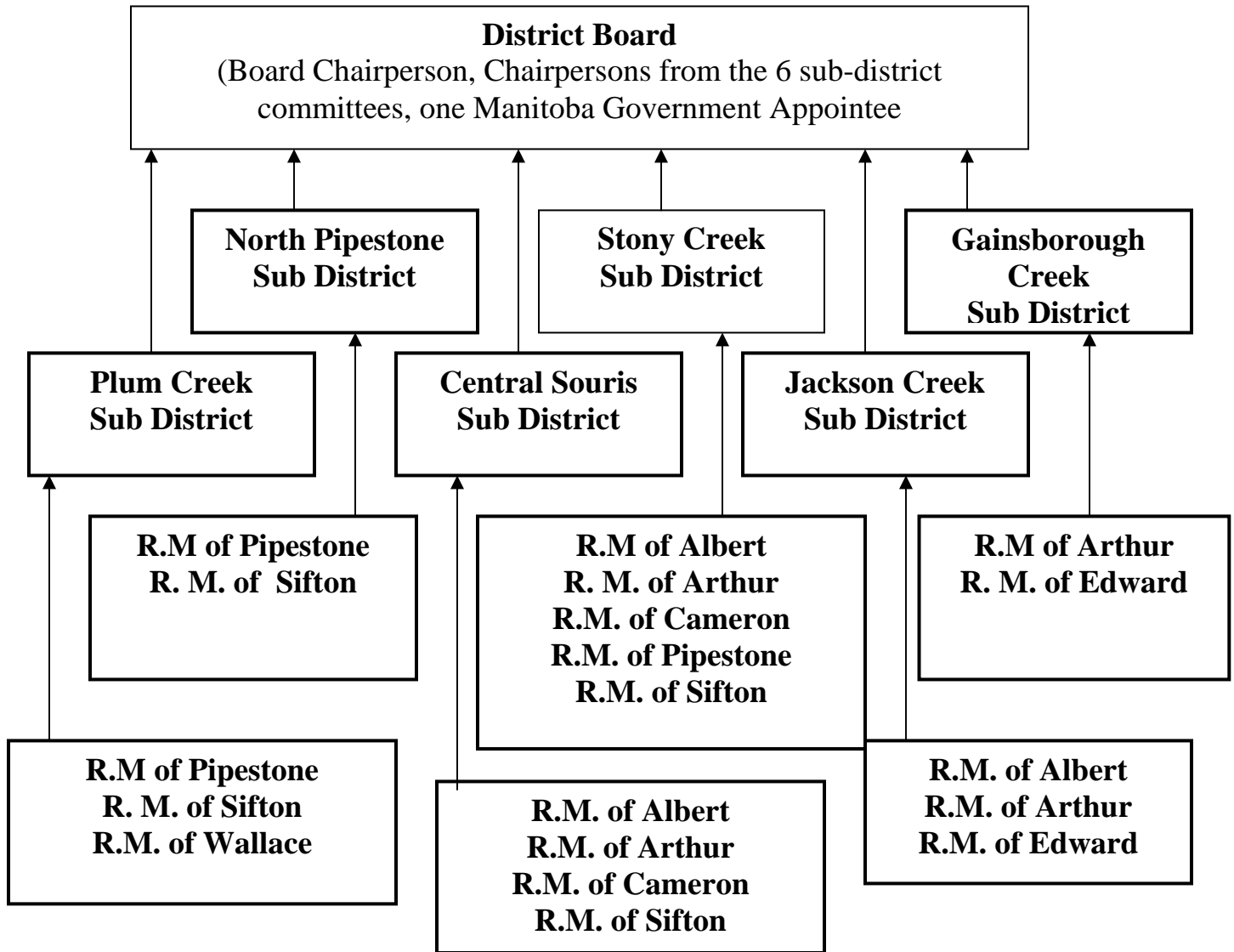
A number of water bodies fall within the WSRCD boundaries: Oak Lake, Plum Lakes, Maple Lakes, Pipestone Creek, Gopher Creek, Jackson Creek, Graham Creek, South Antler Creek, Stony Creek, Plum Creek, Gainsborough Creek and the Souris River.



Conservation Districts Organizational Chart



WSRCD Board and Municipal Representation



# West Souris River Conservation District Member Handbook

## West Souris River Conservation District

### **Board**

**Lloyd Atchison**, Board *Chairperson*  
**Perry Hendry**, Jackson Creek Sub District  
**Richard Thiry**, North Pipestone Sub District  
**Alex Grieve**, Plum Creek Sub District  
**Tim McMechan**, Gainsborough Creek Sub District  
**Gord White**, Central Souris Sub District  
**Wilson Davis**, Stony Creek Sub District  
**Dave Dickson**, Provincial Appointee

### **Full Time Staff**

District Manager – **Dean Brooker**  
Administrator – **Ina Cook**  
GIS/Resource Technician – **Tim Gompf**  
**Seasonal & Part Time Staff**  
Work Supervisor – **Mike Herbert**  
Admin Assistant – **Carman Martin**

### **Sub-District Members 2011**

**\*Sub-District Chairperson**

**\*\* WSRC D Board Chairperson**

#### **Stony Creek Sub District**

<b>* Wilson Davis</b>	854-2989
<b>** Lloyd Atchison</b>	854-2947
Randy Henuset	854-2523
Karen Jones	686-2358
Ron Rutherford	854-2586
Claude Martin	858-2754
Randy Duthie	522-3769
Dexter Jones	851-2503

#### **Plum Creek Sub District**

<b>* Alex Grieve</b>	748-6595
Jack Robson	858-2445
Bob Duncan	556-2348
Jim Pringle	877-3855
Greg Penner	556-2340
Rick Plasier	855-2207

<b>*Richard Thiry</b>	855-2917
Jack Forsyth	748-2659
Russell Thiessen	851-0795
John Galvin	748-3596

# West Souris River Conservation District Member Handbook

<b>Jackson Creek Sub District</b>	<b>* Perry Hendry</b>	686-2383
	Mel Irwin	662-4591
	Brian Sterling	686-2324
	Kevin Martin	662-4402
	Gordon Dell	522-3606
	Bruce Wheelans	686-2343
	Ron Vanbeselaere	522-3556
	Vacant Poistion	
<b>Gainsborough Creek Sub District</b>	<b>* Tim McMechan</b>	649-2359
	Carey Murray	649-2345
	Jeff McKinney	673-2606
	Delnor Davies	634-2236
	Todd Daniels	634-2525
<b>Central Souris Sub District</b>	<b>*Gord White</b>	858-2006
	Scott Phillips	858-2718
	Roland Peloquin	858-2454
	Greg Barrows	858-2687
<b>Provincial Appointee</b>	<b>Dave Dickson</b>	686-2410
<b>WSRCD Board Chairperson</b>	<b>Lloyd Atchison</b>	854-2947

# West Souris River Conservation District Member Handbook

## Manitoba Conservation Districts Association

### Representatives

<b>Murray Seymour</b> , Chairperson, PVCD	822-3365
<b>Heather Dagleish</b> , Vice-Chairperson, AHCD	763-4952
<b>Cornie Goertzen</b> , Finance Chair, SRRCD	326-3105
<b>Harold Foster</b> , EICD	378-2129
<b>Kathy Joyal</b> , KCD	623-3909
<b>Roy Wood</b> , LSRBCD	745-2447
<b>Ron Turetsky</b> , LPCD	546-3290
<b>Ray Frey</b> , LSRCD	848-2610
<b>Richard Sexton</b> , TMCD	747-2972
<b>Paul Brunel</b> , TRWCD	447-2721
<b>Ron Kostecky</b> , UARCD	859-2558
<b>Ernie Bayduza</b> , IMCD	638-0392
<b>Danny North</b> , ACD	
<b>Arnold Coutts</b> , WWCD	386-2444
<b>Doug Oliver</b> -WIWCD	383-5887
<b>Marc Ross</b> - CCCD	392-7111
<b>Lloyd Atchison</b> -WSRCD	854-2947
<b>Walter Pacamaniuk</b> -SLWCD	525-4818
<b>Sharla Boychuk</b> , Executive Director, MCDA	570-0164

# West Souris River Conservation District Member Handbook

## Watershed Planning and Projects

### **Neepawa Office**

Box 20,000 , 123 Main Street  
Neepawa MB R0J 1H0  
Fax: 476-7539

Wayne Hildebrand, P. Ag.  
Manager  
[wayne.hildebrand@gov.mb.ca](mailto:wayne.hildebrand@gov.mb.ca)  
Phone: 476-7033

Sheldon Anderson  
Senior Watershed Planner/ Administrator  
[sheldon.anderson@gov.mb.ca](mailto:sheldon.anderson@gov.mb.ca)  
Phone: 476-7034

### **Winnipeg Office**

Box 11-200 Saulteaux Cr.  
Winnipeg MB R3J 3W3  
Fax: 945-7419

Sarah Coughlin  
Senior Watershed Planner  
[sarah.coughlin@gov.mb.ca](mailto:sarah.coughlin@gov.mb.ca)  
Phone: 945-7408

Vacant  
Watershed Planner  
[jonathan.wiens@gov.mb.ca](mailto:jonathan.wiens@gov.mb.ca)  
Phone: 945-6392

Erin Shay  
Watershed Planner  
[erin.shay@gov.mb.ca](mailto:erin.shay@gov.mb.ca)  
Phone: 945-5461

Patrick Watson  
Watershed Planner  
[patrick.watson@gov.mb.ca](mailto:patrick.watson@gov.mb.ca)  
Phone: 346-6115

### **Brandon Office**

Box 13-1129 Queens Ave.  
Brandon MB R7A 1L9  
Fax: 726-6301

Andrea McLean (WSRCD Planner)  
Watershed Planner  
[andrea.mclean@gov.mb.ca](mailto:andrea.mclean@gov.mb.ca)  
Phone: 726-6633

Suzanne Smith  
Watershed Planner  
[Suzanne.smith@gov.mb.ca](mailto:Suzanne.smith@gov.mb.ca)  
Phone: 476-7036

### **Dauphin Office**

Box 9 27 2<sup>nd</sup> Ave. SW  
Dauphin MB R7N 3E5  
Fax: 638-8626

Vacant  
Watershed Planner  
[david.jones@gov.mb.ca](mailto:david.jones@gov.mb.ca)  
Phone: 622-2069

# West Souris River Conservation District Member Handbook

## Manitoba Conservation Districts – Managers

Alonsa	<b>Harry Harris</b>	767-2101	Alonsa
Assiniboine Hills	<b>Neil Zalluski</b>	535-2139	Baldur
Cooks Creek	<b>Colin Gluting</b>	777-2223	Winnipeg
East Interlake	<b>Armand Boulanger</b>	642-7578	Gimili
Intermountain	<b>Jody Tucker</b>	742-3764	Ethelbert
Kelsey	<b>Shawn Sexsmith</b>	623-3353	The Pas
LaSalle	<b>Justin Reid</b>	526-2578	Holland
Redboine			
Lake of the Prairies	<b>Adam Kerkowich</b>	564-2388	Inglis
Little Saskatchewan	<b>Colleen Cuvelier</b>	566-2270	Oak River
Pembina Valley	<b>Cliff Greenfield</b>	242-3267	Manitou
Seine-Rat River	<b>Kristy-Layane Carr</b>	424-5845	LaBroquerie
Swan Lake	<b>Brent Erlendson</b>	734-9550	Swan River
Turtle Mountain	<b>Yasemin Wruth</b>	747-2530	Deloraine
Turtle River	<b>Bobby Bennett</b>	447-2139	Ste. Rose du Lac
Upper Assiniboine	<b>Ryan Canart</b>	567-3554	Miniota
West Interlake	<b>Linda Millar</b>	762-5850	Lundar
West Souris River	<b>Dean Brooker</b>	877-3020	Reston
Whitemud	<b>Chris Reynolds</b>	476-5019	Neepawa

# **West Souris River Conservation District Member Handbook**

## **Conservation District Commission Members**

**Don Norquay**, Deputy Minister – Water Stewardship  
Chairperson  
314 Legislative Building, Winnipeg, MB R3C 0V8  
Phone: 945-0982                      Fax: 948-2519

**Fred Meier**, Deputy Minister – Conservation  
332 Legislative Building, Winnipeg, MB R3C 0V8  
Phone: 945-3785                      Fax: 945-2403

**Doug McNeil**, Deputy Minister – Infrastructure and Transportation  
209 Legislative Building, Winnipeg, MB R3C 0V8  
Email: [dmmitt@leg.gov.mb.ca](mailto:dmmitt@leg.gov.mb.ca)  
Phone: 945-3768                      Fax: 945-4766

**Barry Todd**, Deputy Minister – Agriculture, Food, and Rural Initiatives  
159 Legislative Building, Winnipeg, MB R3C 0V8  
Email: [btodd@leg.gov.mb.ca](mailto:btodd@leg.gov.mb.ca)  
Phone: 945-3734                      Fax: 948-2095

**Jan Sanderson**, Deputy Minister of Health Living, Youth and Seniors  
3rd Floor, 332 Bannatyne Avenue, Winnipeg, MB R3A 0E2  
Email: [dmhlys@gov.mb.ca](mailto:dmhlys@gov.mb.ca)  
Phone: 204-945-2311                  Fax: 204-948-2585

**John Clarkson**, Deputy Minister of Innovation, Energy and Mines  
349 Legislative Building, Winnipeg, MB R3C 0V8  
Email: [dmiem@leg.gov.mb.ca](mailto:dmiem@leg.gov.mb.ca)  
Phone: 204-945-2771                  Fax: 204-948-2747

**Hugh Eliasson**, Deputy Minister of Finance  
350 Legislative Building, Winnipeg, MB R3C 0V8  
Email: [dmfin@leg.gov.mb.ca](mailto:dmfin@leg.gov.mb.ca)  
Phone: 204-945-5343                  Fax: 204-945-1640

**Joe Masi, Executive Director**, Association of Manitoba Municipalities  
1910 Saskatchewan Ave. W, Portage la Prairie, MB R1N 0P1  
Phone: (204) 857-8666                  Fax: (204)856-2370



# **West Souris River Conservation District Member Handbook**

## **Budgeting Process**

- Budgets are prepared annually by the Board
- Draft Budget must be prepared by August 15<sup>th</sup>
- Budget must be sent to the CD Secretariat Office by October 1<sup>st</sup> and approved by Board Resolution
- A budget review workshop is recommended with other agencies for input into District Programming
- Commission/MCDA Finance Committee meet in early December
- The budget will be considered by the Commission before April 1<sup>st</sup>
- Board to approve a final program and budget once provincial grant funding is approved and a copy must be sent to the CD Secretariat by July.

## **Surplus Local Funds**

The actual expenditures of a district in a given year will vary somewhat with the estimated costs. There can be a surplus of funds in any given account. These funds generally remain in the account for which they were originally raised. The balances of these accounts may then be applied against projected expenditures in the next year's program.

Sometimes accounts will end up in a negative position at year end. These over expenditures are generally temporary in nature and can be offset by surpluses in other accounts. The deficit is normally rectified as part of the next year's budget process or the board may approve a permanent transfer of the funds to cover the over expenditure.

# **West Souris River Conservation District Member Handbook**

## **Generation of Funds**

Funding for the WSRCDC is provided by four sources:

- 1.) Provincial Grant (Core Funding)
  - 2.) Municipal Levy (Core Funding)
  - 3.) External Agencies/Sources
  - 4.) Private Sources
- The Province endeavors to match the municipal levy funding on a 3:1 basis.
  - Municipal Levy requests are based on the annual budget requirement. The CD's annual levy requirement is based on the portioned land assessment. (Portioned land assessment x mill rate determines levy required.)
  - Where External Agency funding is acquired to carry out a program, the overall program cost will be reduced by that amount and the balance will be cost-shared 75% Provincial Grant/ 25% Municipal Levy.
  - Other private sources such as landowner contributions or municipal grants are often received to carry out projects. The overall program cost will be reduced by that amount and the balance will be cost shared 75% Provincial Grant/ 25% Municipal Levy. These funds are not eligible for matching provincial grant funding.
  - The WSRCDC obtains considerable amount of external funding each year to carry out programs.